

ENGINEERING REPORT

December 13, 2024

To: PBCSD Board of Directors
From: Chris Simmons, Associate Engineer
Subject: Operations & Maintenance Report: 10/19/24 – 12/5/24



1. SUMMARY OF ENGINEERING/MAINTENANCE ACTIVITY:

- Administration – Roof Drains Cleaning - Completed Oct. 21st
- Forest Lake Reservoir – Sluice Gates Exercised, Cleaned & Lubricated – Completed Oct. 21st
- Forest Lake Reservoir – New Level Indicator – Installed Oct. 22nd
- Reclamation – MPCC No. 9 New Flow Meter – Installed Nov. 8th
- Wastewater Collection – New Smart Cover on Manhole (Sunset Ln) – Installed Nov. 19th
- Wastewater Collection – Frequently Cleaned Line Cleaning – Completed November
- Wastewater PS-2 (Fanshell Beach) – New Rain Gauge – Installed Nov. 21st
- Wastewater PS-3 (Seal Rock) – Pump Motors (75 hp) Reinstalled – Completed Nov. 5th
- Wastewater PS-3 (Seal Rock) – Generator Room Access Lid Reseal – Completed Nov. 19th
- Regulatory Compliance – Forest Lake Reservoir Annual Inspection (DSOD) – Nov. 8th

2. FOREST LAKE WATER STORAGE STATUS:

Approximately **75** million gallons or **230** acre-feet of recycled water is currently stored in Forest Lake Reservoir which represents **65%** of the permitted capacity of **115** million gallons. The current storage volume is **12% above** the historic average of **67** million gallons or **206** acre-feet. A chart showing the volume of storage at the reservoir over the course of the current irrigation season is attached.

3. WASTEWATER FLOW MEASUREMENTS:

Average daily wastewater flows of **347,000 & 336,000** gallons per day (gpd) were measured at the PBCSD Carmel gate flow metering station for the months of **October & November**, which represented **31% & 29%** of the total monthly flow of **1,124,000** gpd for **October** and **1,153,000** gpd for **November**, respectively, at the CAWD treatment plant. The measured PBCSD flows were **7% above** the five-year average of **325,000** gpd for the month of **October**, and roughly equivalent to the five-year average of **337,000** gpd for the month of **November**. The CAWD total flows were **4% above** the five-year average of **1,084,000** gpd for the month of **November**, and **5% above the five-year average of 1,097,000 gpd**. A chart showing the quantities of PBCSD wastewater flow recorded during the months of **October and November** and a graph showing average daily wastewater flows from PBCSD and the CAWD treatment plant for the past twelve months as well as the five-year average for each month are attached.

4. RECYCLED WATER USE:

Total irrigation water demand for the **2024** calendar year through **November** was **879** acre-feet. Total demand for the calendar year is **9% below** the **5-year** annual average usage of **964**

acre-feet and is **9% below** the **29-year** average annual usage of **967** acre-feet. **2024** irrigation demand to-date through **November** is **4% above** last year's end of **November** total to-date demand of **847** acre-feet. The month of **November** observed an **increase** in net storage of **22** million gallons, as the reservoir storage volume rose from **48** million gallons up to **70** million gallons. By comparison, a net storage **increase** of **15** million gallons was observed in **November** of last year.

The attached chart summarizes monthly recycled water usage for the **2024** calendar year through **November** along with the **prior year, 5-year, & 29-year** monthly averages. Two additional charts & two additional graphs show the total recycled water usage recorded on a daily basis for the months of **October and November 2024 to-date**. Also attached is a graph showing monthly production vs usage over the past twelve-month period.

5. ALTERNATIVE SOURCE WATER:

The four alternative source well sites (MPCC No. 8 & 9, Bird Rock No. 1 & 2) were taken out of service on October 24th due to low recycled water demand late in the irrigation season and decreased production at the wells. The three alternative source water diversion facilities (4th fairway diversion, 18th green diversion, and 18th fairway diversion) were taken out of service in mid-November ahead of the first forecasted storm even on November 22nd, during which local rain gauges collected 2.3 inches of precipitation throughout the duration of the rain event (4 days). All (7) alternative source water sites will remain offline throughout the winter wet season. Total production for the **2024** calendar year through **November** was approximately **13.6** million gallons. Three combined charts/graphs show the total production recorded daily for the months of **October and November 2024 to-date**. Also attached is a summary chart/graph showing the total **2024 calendar year production**.

6. SANITARY SEWER OVERFLOW:

No sanitary sewer overflows were reported during the reporting period.

7. FEEDBACK:

DATE	ADDRESS	DESCRIPTION
10/29/2024	4058 Mora Ln	Resident phoned the District about a sewer lateral backup. Their backup was cleared by plumber, who let resident know that the backup was pushed down to the District main line behind the property. Staff responded by visiting the property and clearing the issue that day.

8. SEWER LINE CLEANING:

Using the District's line cleaning truck (PB-8) the Maintenance Department cleaned sewer mains during the reporting period ending **December 5th**. The following is a monthly summary table showing sewer line cleaning footages performed by District Maintenance staff in **2024**:

	JAN	FEB	MAR	APR	MAY	JUN	JUL	AUG	SEP	OCT*	NOV	DEC*
Total*	35,722	12,763	19,760	18,991	13,224	24,820	27,796	35,848	32,728	39,420	30,401	655

*Reflects line cleaning through December 5, 2024.

9. SOURCE CONTROL:

The Maintenance Department inspected grease interceptors/traps at the following locations: The Beach & Tennis Club, Cypress Point, Fairway One, Hay's Place at the Hay, The Lodge, Monterey Peninsula Country Club (MPCC), Poppy Hills, and the Inn at Spanish Bay. Staff carried out inspections during the months of **November and December** and noted that all locations were in acceptable condition.

10. UNDERGROUND SERVICE ALERT (USA) REQUESTS:

Maintenance staff responded to underground service alert (USA) requests marking sewer and/or recycled water lines at **76** locations in the month of **October**, **81** locations in the month of **November**, and **15** locations to-date in the month of **December**. Contractors or other utilities are required to contact the USA system prior to performing construction activities that involve trenching or other underground work. The District identifies the location of wastewater lines with green paint and recycled water lines with purple paint. A summary table showing the number of requests in **2024** for each reporting period is presented below:

	JAN	FEB	MAR	APR	MAY	JUN	JUL	AUG	SEP	OCT	NOV	DEC*
Total*	94	97	81	95	107	84	107	142	125	76	81	15

* Reflects USA requests responded to through December 5, 2024.

11. SEWER CONNECTION PERMITS / INSPECTIONS:

DATE	ADDRESS	DESCRIPTION	OWNER/APPLICANT
11/1/2024	3209 Stillwater Ln.	Permit #3832, Lateral Replacement	JW Doudell Trust
11/4/2024	3020 Cormorant Rd.	Permit #3833, Demo, Cap & Reconnect	Samoon LLC
11/18/2024	28 Poppy Lane	Permit #3834, New Connection for ADU	Tim Allen c/o Megan Vera
11/21/2024	3300 Portola Rd.	Permit #3835, Demo, Cap & Reconnect	Pebble Beach Company
11/21/2024	2790 17 Mile Dr.	Permit #3836, Lateral Replacement	Pebble Beach Company
11/25/2024	4056 Ronda Rd.	Permit #3837, Lateral Replacement	John Coniglio
11/26/2024	3167 Stevenson Dr.	Permit #3838, New Connection for SFD	Salehi Amir & Elmira TRS
12/2/2024	4077 El Bosque	Permit #3839, Lateral Replacement	Lily Yahyavi
12/3/2024	2829 Forest Lodge Rd.	Permit #3840, Lateral Replacement	Frances Nicholson

12. PLAN CHECK REVIEW:

Plan Checks Received	<u>Additions/Remodels</u> (Residential)	<u>New Construction</u> (Residential)	<u>Demo./Rebuild</u> (Residential)
13	9	3	1

Attachments: Wastewater Charts (3)
Recycled Water Charts/Graphs (9)
Forest Lake Storage Chart/Graph (2)
Alternative Reclamation Sources Charts/Graphs (3)



PEBBLE BEACH COMMUNITY SERVICES DISTRICT METERING - OCTOBER 2024 WASTEWATER FLOW RECORD

DATE READ	PBCSD TOTAL GALLONS (Thousands)	CAWD TOTAL GALLONS (Thousands)	PBCSD % of CAWD	COMMENTS
October				
1	358	1,104	32%	-
2	343	1,086	32%	-
3	351	1,131	31%	-
4	376	1,177	32%	-
5	385	1,222	32%	WEEKEND
6	369	1,183	31%	WEEKEND
7	361	1,135	32%	-
8	357	1,079	33%	-
9	358	1,128	32%	-
10	343	1,087	32%	-
11	359	1,168	31%	-
12	397	1,216	33%	WEEKEND
13	379	1,222	31%	WEEKEND
14	360	1,153	31%	-
15	354	1,140	31%	-
16	351	1,126	31%	-
17	367	1,174	31%	-
18	368	1,181	31%	-
19	383	1,216	31%	WEEKEND
20	357	1,170	31%	WEEKEND
21	328	1,090	30%	-
22	339	1,087	31%	-
23	327	1,093	30%	-
24	326	1,096	30%	-
25	324	1,102	29%	-
26	332	1,130	29%	WEEKEND
27	319	1,097	29%	WEEKEND
28	296	1,042	28%	-
29	297	1,013	29%	-
30	299	1,005	30%	-
31	298	1,004	30%	-
November				
TOTAL MONTHLY FLOW	10,761,000	34,859,000	PBCSD % of CAWD	
AVG. GALS. PER DAY	347,000	1,124,000	31%	
PEAK DAY FLOW	397,000	1,222,000		
MINIMUM DAY FLOW	296,000	1,004,000		



PEBBLE BEACH COMMUNITY SERVICES DISTRICT METERING - **NOVEMBER 2024** WASTEWATER FLOW RECORD

DATE READ	PBCSD TOTAL GALLONS (Thousands)	CAWD TOTAL GALLONS (Thousands)	PBCSD % of CAWD	COMMENTS
November				
1	312	1,082	29%	-
2	367	1,186	31%	WEEKEND
3	328	1,166	28%	WEEKEND
4	304	1,075	28%	-
5	298	1,013	29%	-
6	281	1,011	28%	-
7	289	1,045	28%	-
8	306	1,106	28%	-
9	318	1,157	27%	WEEKEND
10	330	1,162	28%	WEEKEND
11	383	1,246	31%	-
12	320	1,130	28%	-
13	297	1,066	28%	-
14	280	1,025	27%	-
15	285	1,065	27%	-
16	290	1,100	26%	WEEKEND
17	278	1,063	26%	WEEKEND
18	269	1,013	27%	-
19	270	973	28%	-
20	268	981	27%	-
21	268	972	28%	-
22	346	1,211	29%	-
23	552	1,500	37%	WEEKEND
24	349	1,176	30%	WEEKEND
25	439	1,356	32%	-
26	488	1,510	32%	-
27	401	1,326	30%	-
28	411	1,291	32%	-
29	381	1,297	29%	-
30	372	1,277	29%	WEEKEND
December				
TOTAL MONTHLY FLOW	10,080,000	34,582,000	PBCSD % of CAWD	
AVG. GALS. PER DAY	336,000	1,153,000	29%	
PEAK DAY FLOW	552,000	1,510,000		
MINIMUM DAY FLOW	268,000	972,000		

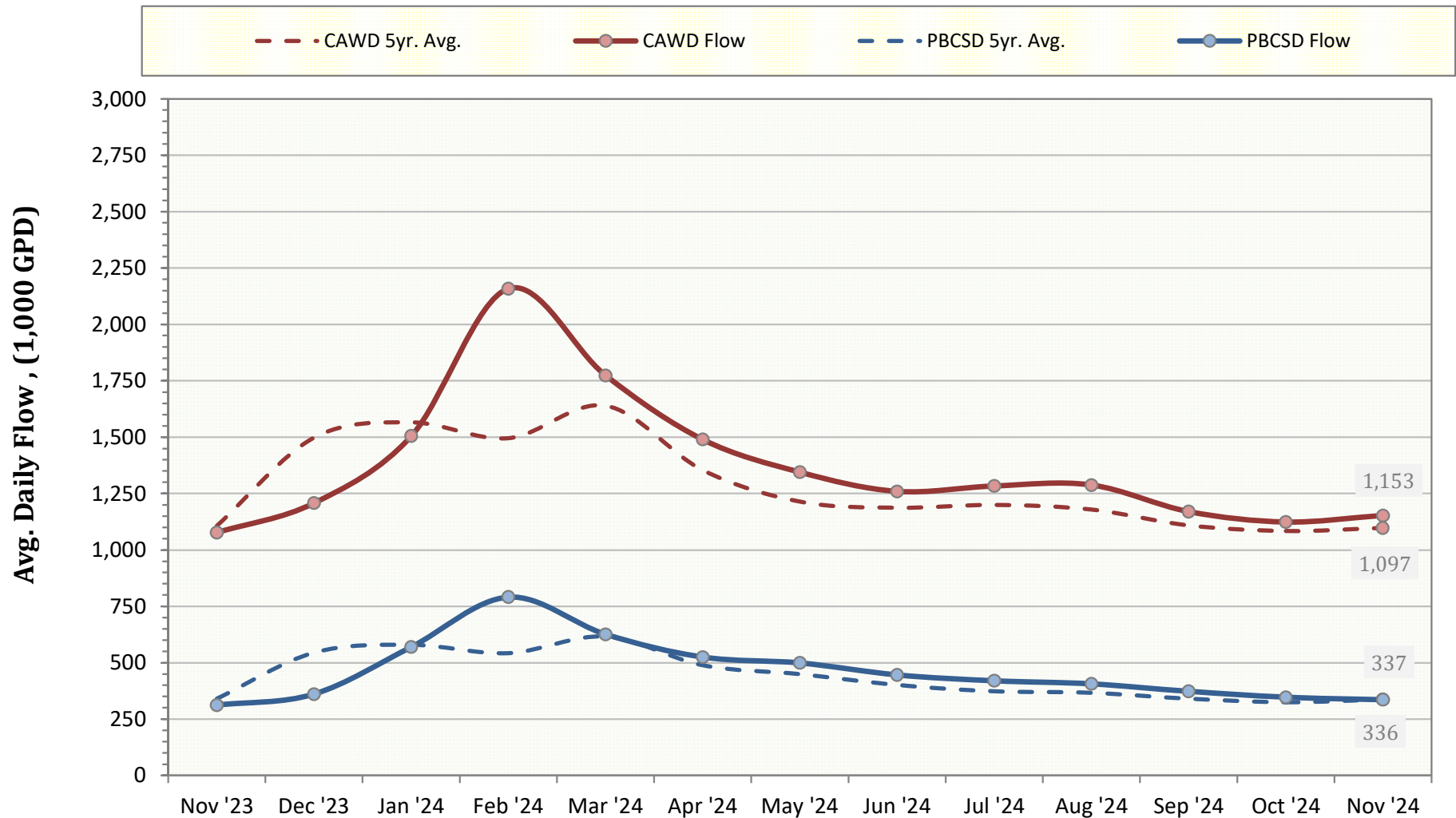


2024 Calendar Year Usage vs Prior Year, 5yr. & 29yr Average

Month	2024 Calendar Year	2023 Calendar Year	Last 5 Yrs Monthly Avg.	29-Year Monthly Avg.
Jan.	1,229,000 Gallons 4 AF	788,000 Gallons 2 AF	3,201,000 Gallons 10 AF	3,796,000 Gallons 12 AF
Feb.	537,000 Gallons 2 AF	1,188,000 Gallons 4 AF	8,632,000 Gallons 26 AF	4,221,000 Gallons 13 AF
Mar.	3,324,000 Gallons 10 AF	485,000 Gallons 1 AF	9,556,000 Gallons 29 AF	11,202,000 Gallons 34 AF
Apr.	18,095,000 Gallons 56 AF	26,561,000 Gallons 82 AF	27,813,000 Gallons 85 AF	27,462,000 Gallons 84 AF
May.	38,835,000 Gallons 119 AF	35,394,000 Gallons 109 AF	42,173,000 Gallons 129 AF	46,877,000 Gallons 144 AF
Jun.	51,407,000 Gallons 158 AF	41,551,000 Gallons 128 AF	48,652,000 Gallons 149 AF	51,670,000 Gallons 159 AF
Jul.	50,114,000 Gallons 154 AF	46,140,000 Gallons 142 AF	46,306,000 Gallons 142 AF	48,314,000 Gallons 148 AF
Aug.	48,325,000 Gallons 148 AF	46,030,000 Gallons 141 AF	45,562,000 Gallons 140 AF	44,665,000 Gallons 137 AF
Sep.	36,320,000 Gallons 111 AF	36,707,000 Gallons 113 AF	37,803,000 Gallons 116 AF	40,390,000 Gallons 124 AF
Oct.	31,040,000 Gallons 95 AF	29,100,000 Gallons 89 AF	31,177,000 Gallons 96 AF	28,330,000 Gallons 87 AF
Nov.	7,045,000 Gallons 22 AF	12,008,000 Gallons 37 AF	13,169,000 Gallons 40 AF	8,139,000 Gallons 25 AF
Dec.	Gallons 0 AF	3,423,000 Gallons 11 AF	2,378,000 Gallons 7 AF	3,737,000 Gallons 11 AF
Total to Date	286,271,000 Gallons 879 AF	275,952,000 Gallons 847 AF	314,044,000 Gallons 964 AF	315,066,000 Gallons 967 AF



Wastewater Flow: 2023/2024 Current vs 5yr. Average





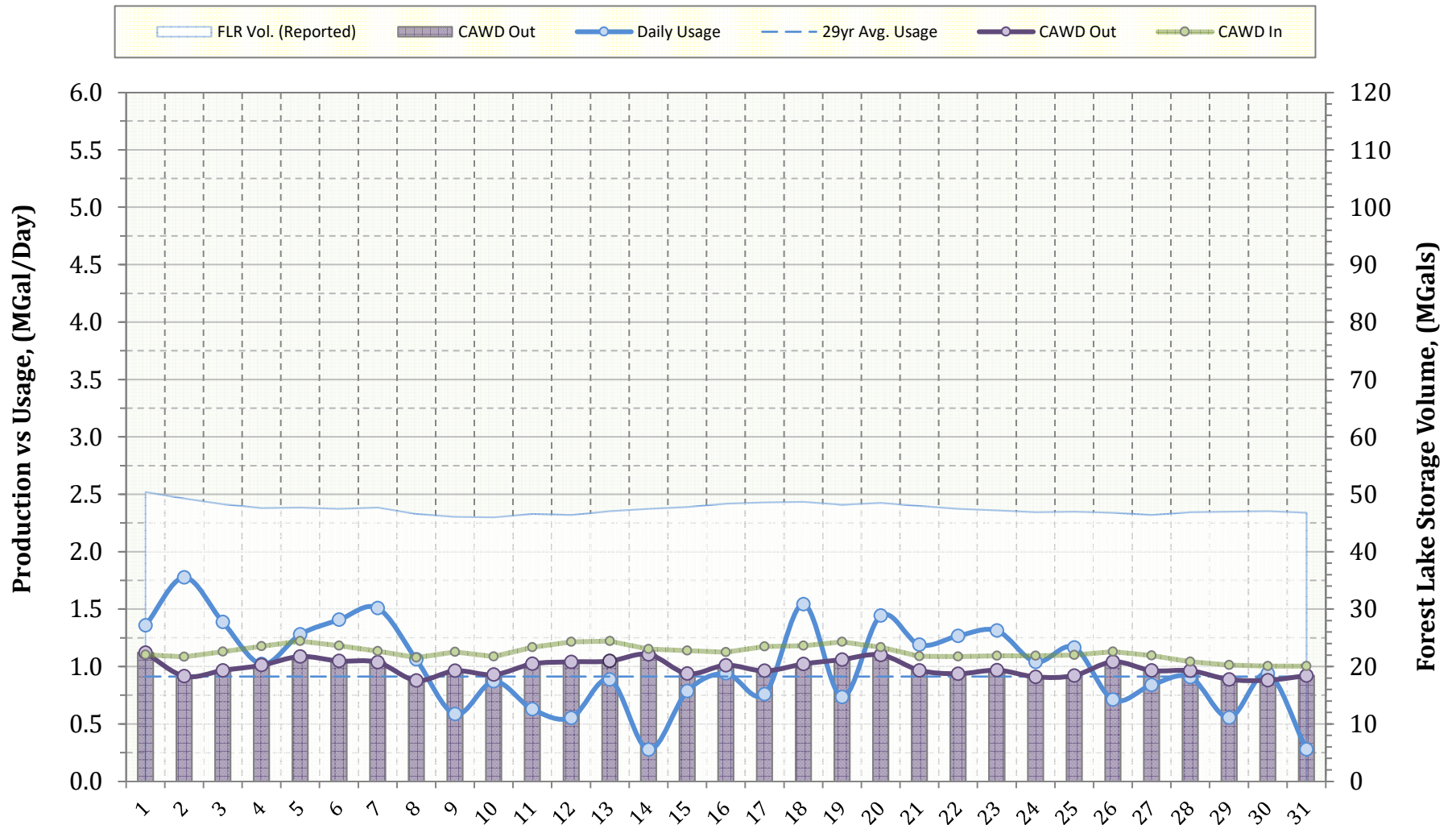
CAWD / PBCSD WASTEWATER RECLAMATION PROJECT

Historical Demand in Million Gallons

Month	2009	2010	2011	2012	2013	2014	2015	2016	2017	2018	2019	2020	2021	2022	2023	2024	Average '09-'23
Jan	5.5	1.4	4.6	10.9	3.0	19.7	14.5	0.8	1.0	1.9	1.4	1.0	4.3	8.5	0.8	1.2	5.3
Feb	0.7	0.5	5.9	11.6	5.1	0.8	9.9	7.1	0.8	13.0	0.5	14.9	2.5	24.1	1.2	0.5	6.6
Mar	12.7	7.9	2.5	14.8	14.9	11.9	29.0	8.7	7.9	3.2	1.9	6.2	15.1	24.1	0.5	3.3	10.8
Apr	48.0	12.2	33.1	12.9	37.6	26.0	30.7	39.4	17.8	17.1	26.2	20.0	38.2	28.1	26.6	18.1	27.6
May	39.1	44.3	45.5	56.2	53.8	54.2	38.4	47.5	48.0	49.1	28.6	49.1	44.2	53.5	35.4	38.8	45.8
Jun	55.1	53.1	34.9	60.4	46.9	48.0	42.4	51.0	50.2	52.3	47.9	51.0	49.5	53.3	41.6	51.4	49.2
Jul	51.0	47.5	49.6	49.0	36.6	44.1	46.4	44.3	48.7	50.4	50.6	47.6	39.7	47.5	46.1	50.1	46.6
Aug	49.3	41.7	35.6	41.2	37.5	43.9	50.4	38.0	41.2	46.1	50.6	41.6	43.0	46.5	46.0	48.3	43.5
Sep	39.6	42.5	38.6	35.1	42.3	37.7	45.1	43.8	46.7	37.7	45.2	34.3	39.3	33.5	36.7	36.3	39.9
Oct	21.3	17.1	19.0	23.1	33.5	33.1	33.9	18.2	37.9	33.6	41.5	32.9	23.6	24.3	29.1	31.0	28.1
Nov	18.9	6.6	3.3	4.2	13.8	1.9	4.0	3.1	7.8	16.2	16.7	16.7	10.6	5.7	12.0	7.2	9.4
Dec	3.2	0.7	6.6	0.3	16.7	0.4	1.3	0.8	17.0	0.6	0.7	7.3	2.9	0.4	3.4	0.2	4.1
Total	344.3	275.5	279.2	319.6	341.5	321.7	346.0	302.7	324.9	321.4	311.7	322.6	312.9	349.5	279.4	286.4	316.9



Daily Usage, CAWD In/Out, Reservoir Storage (October - 2024)

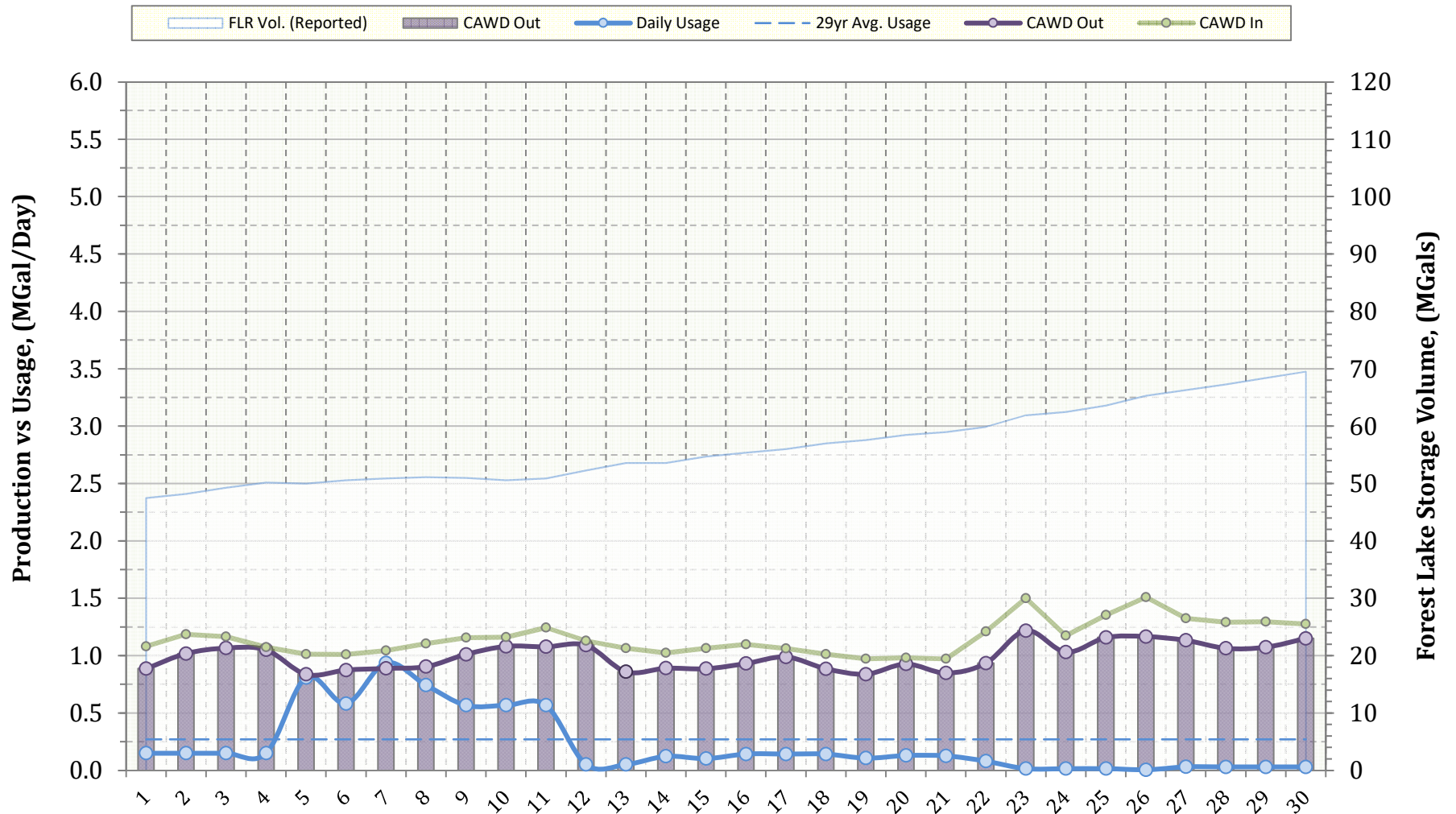




RECLAIMED WATER METER READINGS FOR THE GOLF COURSES (Usage in 1,000 Gallons)														
Oct. '24	POPPY H.	DUNES	SHORE	CYPRESS	PEBBLE	SPYGLASS	SPANISH BAY	OTHER	TOTAL	CAWD IN	CAWD OUT	% Production	FLR Volume	Prior Yr. FLR Volume
1	189	210	130	147	340	207	122	13	1,358	1,104	1,121	102%	50.4	58.7
2	252	435	232	120	271	214	179	73	1,776	1,086	917	84%	49.3	58.5
3	211	260	80	31	348	198	180	80	1,388	1,131	967	85%	48.3	58.8
4	68	200	31	75	211	120	296	21	1,022	1,177	1,013	86%	47.6	58.5
5	59	450	115	91	264	152	114	36	1,281	1,222	1,088	89%	47.7	57.9
6	133	205	201	331	204	119	157	58	1,408	1,183	1,049	89%	47.5	57.5
7	360	380	220	12	357	52	80	49	1,510	1,135	1,038	91%	47.7	56.1
8	52	55	29	151	350	129	239	57	1,062	1,079	879	81%	46.6	55.5
9	43	85	20	6	312	25	91	5	587	1,128	964	85%	46.1	55.5
10	31	175	217	125	30	90	172	31	871	1,087	930	86%	46	55.3
11	41	30	75	22	229	117	70	46	630	1,168	1,025	88%	46.6	55.6
12	33	105	92	12	82	70	136	24	554	1,216	1,042	86%	46.4	55.7
13	35	135	148	175	217	109	19	50	888	1,222	1,048	86%	47.1	55.7
14	2	45	13	2	56	22	137	0	277	1,153	1,107	96%	47.5	55.6
15	194	40	30	10	353	91	6	63	787	1,140	939	82%	47.8	55.4
16	28	315	3	18	240	93	205	39	941	1,126	1,012	90%	48.4	55.4
17	53	285	105	118	60	130	4	6	761	1,174	964	82%	48.6	55.2
18	381	45	134	52	390	255	204	83	1,544	1,181	1,023	87%	48.7	55.7
19	63	45	185	9	174	40	158	61	735	1,216	1,061	87%	48.2	54.4
20	115	230	158	357	256	219	64	45	1,444	1,170	1,101	94%	48.5	54.8
21	117	175	128	190	277	83	209	11	1,190	1,090	968	89%	48	55.6
22	44	145	173	265	292	96	234	18	1,267	1,087	938	86%	47.5	55.6
23	202	135	276	3	268	218	153	59	1,314	1,093	969	89%	47.2	56.4
24	219	85	267	4	273	136	20	37	1,041	1,096	911	83%	46.9	57.4
25	223	160	56	130	215	171	171	41	1,167	1,102	922	84%	47	58.2
26	109	35	141	6	225	161	4	31	712	1,130	1,043	92%	46.8	58.0
27	70	145	177	24	202	178	10	36	842	1,097	966	88%	46.4	58.4
28	41	190	108	113	132	95	223	6	908	1,042	964	93%	46.9	58.7
29	20	10	1	16	225	41	211	32	556	1,013	888	88%	47	59.1
30	33	80	20	163	181	215	208	40	940	1,005	882	88%	47.1	59.2
31	2	10	12	2	38	27	176	14	281	1,004	921	92%	46.8	59.0
TOTAL	3,423	4,900	3,577	2,780	7,072	3,873	4,252	1,163	31,040	34,859	30,658	88%		



Daily Usage, CAWD In/Out, Reservoir Storage (November - 2024)

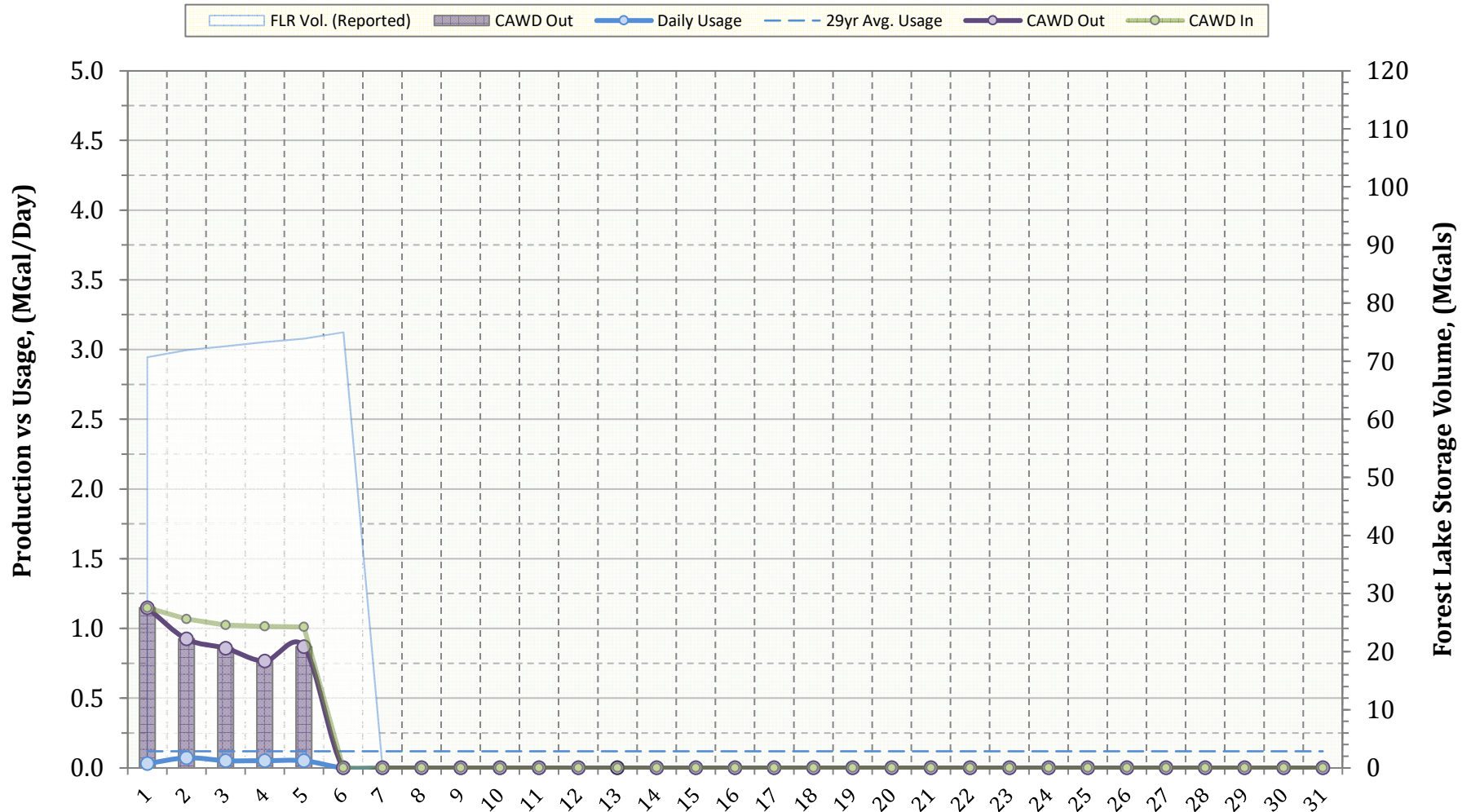




RECLAIMED WATER METER READINGS FOR THE GOLF COURSES (Usage in 1,000 Gallons)														
Nov. '24	POPPY H.	DUNES	SHORE	CYPRESS	PEBBLE	SPYGLASS	SPANISH BAY	OTHER	TOTAL	CAWD IN	CAWD OUT	% Production	FLR Volume	Prior Yr. FLR Volume
1	0	0	0	0	0	0	0	0	151	1,082	887	82%	47.5	58.2
2	0	0	0	0	0	0	0	0	151	1,186	1,019	86%	48.2	56.9
3	10	30	9	1	184	51	98	69	151	1,166	1,067	91%	49.3	56.1
4	40	120	160	149	202	33	93	13	810	1,075	1,051	98%	50.2	55.1
5	4	95	43	50	197	26	118	50	583	1,013	838	83%	50	55.4
6	128	140	169	120	238	53	82	8	938	1,011	876	87%	50.6	55.3
7	97	95	58	134	264	60	16	20	744	1,045	890	85%	50.9	56.2
8	0	0	0	0	0	0	0	0	568	1,106	905	82%	51.1	56.8
9	0	0	0	0	0	0	0	0	568	1,157	1,012	87%	51	57.3
10	0	0	0	0	0	0	0	0	568	1,162	1,082	93%	50.6	57.8
11	367	200	185	458	449	305	260	50	568	1,246	1,078	87%	50.9	58.2
12	1	0	5	2	18	5	21	0	52	1,130	1,091	97%	52.3	58.8
13	1	5	2	1	46	24	38	7	124	1,066	861	81%	53.6	58.9
14	1	15	12	4	55	12	4	1	104	1,025	892	87%	53.6	59.3
15	0	0	0	0	0	0	0	0	143	1,065	887	83%	54.7	59.8
16	0	0	0	0	0	0	0	0	143	1,100	932	85%	55.4	60.8
17	2	30	11	3	246	133	3	1	143	1,063	990	93%	56	61.7
18	1	5	35	6	8	47	1	6	109	1,013	886	87%	57	62.8
19	1	15	72	3	6	31	2	1	131	973	839	86%	57.6	64.1
20	1	10	49	2	11	49	3	2	127	981	928	95%	58.5	64.8
21	1	10	32	12	8	16	2	1	82	972	849	87%	59	66.4
22	0	0	0	0	0	0	0	0	17	1,211	936	77%	59.9	66.6
23	0	0	0	0	0	0	0	0	17	1,500	1,219	81%	61.9	67.5
24	2	15	4	9	5	3	5	7	17	1,176	1,032	88%	62.5	68.6
25	0	0	0	0	4	1	0	1	6	1,356	1,159	86%	63.6	69.4
26	1	5	0	0	4	18	0	4	32	1,510	1,167	77%	65.3	70.4
27	0	0	0	0	0	0	0	0	31	1,326	1,135	86%	66.3	70.9
28	0	0	0	0	0	0	0	0	31	1,291	1,065	82%	67.3	72.1
29	0	0	0	0	0	0	0	0	31	1,297	1,074	83%	68.4	72.2
30	0	0	0	0	0	0	0	0	31	1,277	1,151	90%	69.5	73.0
TOTAL	658	790	846	954	1,945	867	746	239	7,169	34,582	29,796	86%		



Daily Usage, CAWD In/Out, Reservoir Storage (December - 2024)



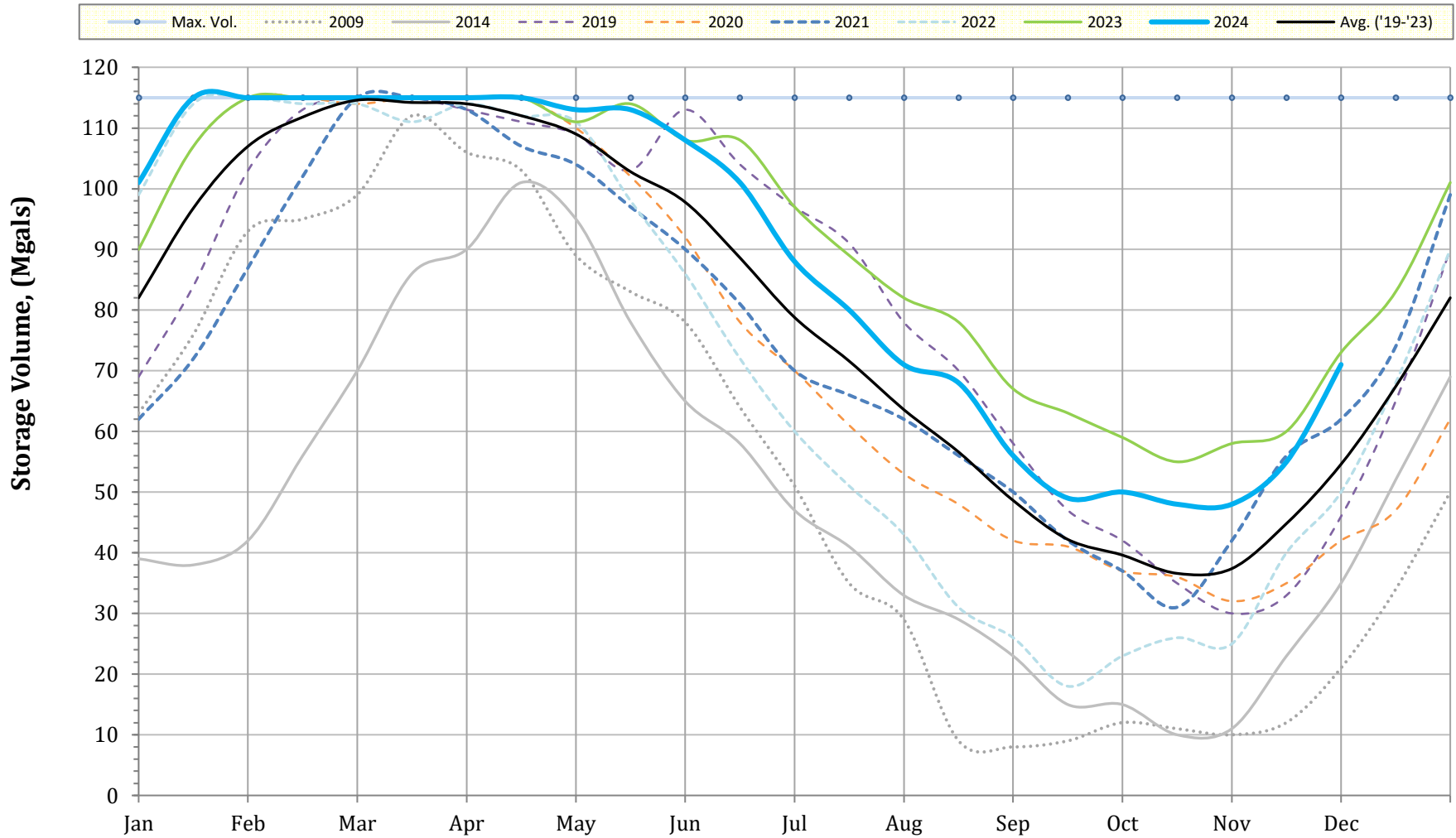


RECLAIMED WATER METER READINGS FOR THE GOLF COURSES (Usage in 1,000 Gallons)														
Dec. '24	POPPY H.	DUNES	SHORE	CYPRESS	PEBBLE	SPYGLASS	SPANISH BAY	OTHER	TOTAL	CAWD IN	CAWD OUT	% Production	FLR Volume	Prior Yr. FLR Volume
1	11	10	8	4	28	10	3	80	31	1,148	1,148	100%	70.7	73.4
2	12	5	4	6	25	2	0	19	73	1,067	925	87%	71.9	74.1
3	14	0	4	1	10	3	1	19	52	1,024	859	84%	72.6	74.8
4	6	5	6	0	19	6	0	10	52	1,015	767	76%	73.3	75.6
5	4	0	4	2	15	26	0	1	52	1,012	869	86%	73.9	76.1
6									0				75	76.3
7									0					77.4
8									0					78.1
9														79.0
10														80.0
11														80.3
12														81.1
13									0					81.7
14									0					82.6
15									0					82.7
16														83.4
17														84.1
18														85.4
19														86.3
20									0					87.6
21									0					89.0
22									0					89.7
23									0					90.7
24									0					91.6
25									0					92.5
26														93.6
27									0					94.6
28									0					95.5
29									0					96.5
30														98.5
31														99.7
TOTAL	47	20	26	13	97	47	4	128	259	5,265	4,567	87%		



Forest Lake Reservoir Storage Volume Current vs Historic

Current Volume: 75



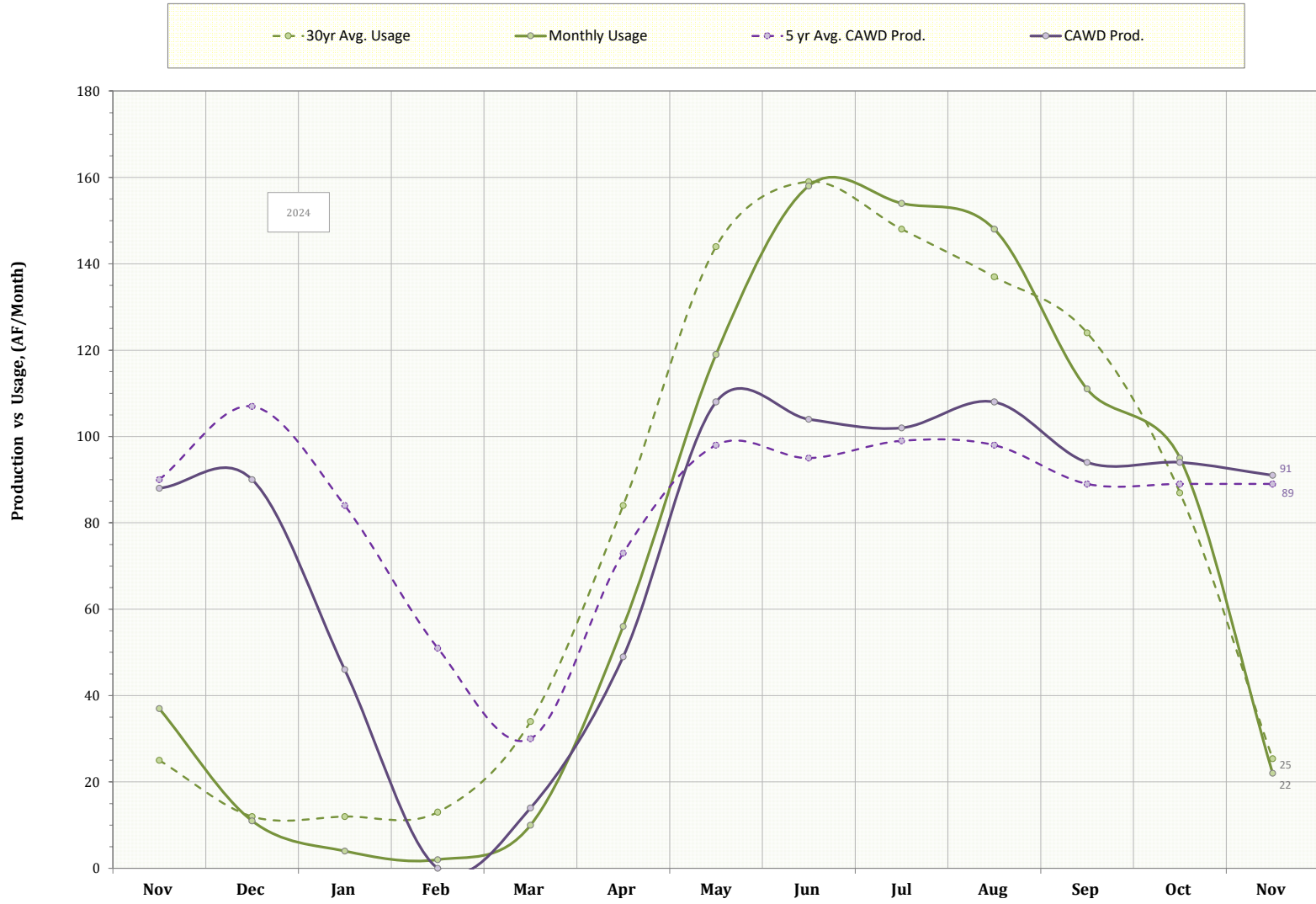


**Forest Lake Reservoir
Current/Historic Storage Volume**

Date	Max. Vol.	2009	2010	2011	2012	2013	2014	2015	2016	2017	2018	2019	2020	2021	2022	2023	2024	Avg. ('19-'23)	
Jan	1st	115	63	50	107	97	63	39	69	65	95	54	69	90	62	99	90	101	82
	15th	115	76	59	114	102	71	38	79	83	114	71	84	107	72	114	107	115	97
Feb	1st	115	93	79	110	107	77	42	83	106	112	90	103	115	87	115	115	115	107
	15th	115	95	96	112	107	84	56	93	115	114	96	113	115	102	114	115	115	112
Mar	1st	115	99	110	114	112	94	70	102	112	115	104	115	114	115	114	115	115	115
	15th	115	112	111	114	115	105	86	109	115	111	115	115	115	115	111	115	115	114
Apr	1st	115	106	113	115	114	108	90	105	112	115	115	113	115	113	114	115	115	114
	15th	115	103	115	112	114	108	101	101	113	114	115	111	115	107	112	115	115	112
May	1st	115	89	104	108	114	96	95	99	106	112	109	110	104	111	111	113	113	109
	15th	115	83	105	97	103	73	78	90	103	101	103	102	97	98	114	113	113	103
Jun	1st	115	78	99	94	88	65	65	85	93	95	93	113	92	90	86	108	108	98
	15th	115	64	85	94	69	57	58	77	79	88	80	104	78	81	72	108	101	89
Jul	1st	115	51	78	87	53	51	47	65	67	74	69	97	70	70	60	97	88	79
	15th	115	35	68	77	47	47	41	53	63	65	57	91	61	66	51	89	80	72
Aug	1st	115	29	60	63	36	52	33	45	57	57	50	78	53	62	43	82	71	64
	15th	115	9	61	59	32	49	29	39	53	53	43	70	48	56	31	78	68	57
Sep	1st	115	8	52	60	25	45	23	28	47	49	34	58	42	50	26	67	56	49
	15th	115	9	40	51	20	35	15	19	38	41	28	47	41	42	18	63	49	42
Oct	1st	115	12	33	48	20	29	15	22	28	32	30	42	37	37	23	59	50	40
	15th	115	11	33	59	14	18	10	16	22	24	27	35	36	31	26	55	48	37
Nov	1st	115	10	46	60	26	18	11	15	38	23	25	30	32	42	25	58	48	37
	15th	115	12	54	67	34	21	23	26	48	30	23	33	35	56	40	60	55	45
Dec	1st	115	21	68	74	43	31	35	38	63	42	38	46	42	62	50	73	71	55
	15th	115	34	80	83	52	36	52	49	76	46	51	65	47	74	68	83		67



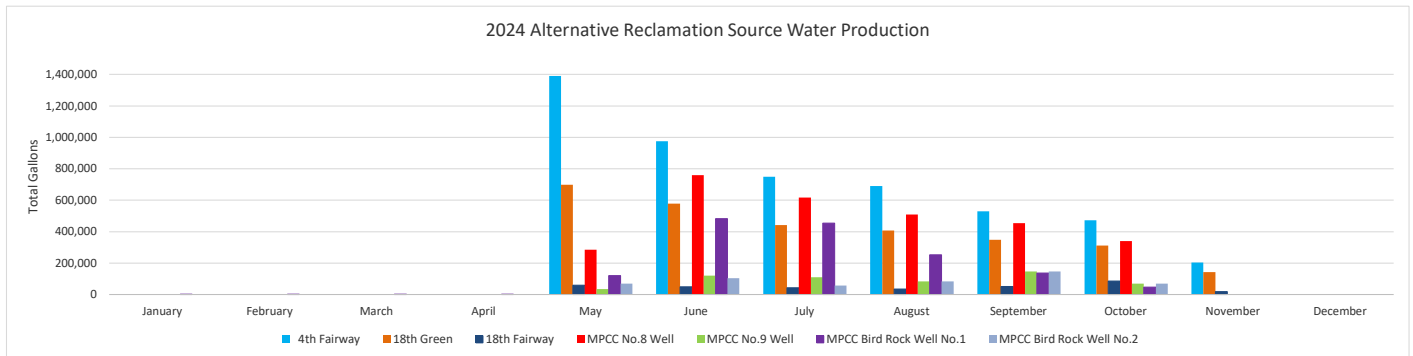
Monthly Production vs Usage (2023/2024)





2024 Alternative Reclamation Sources Calendar Year Production

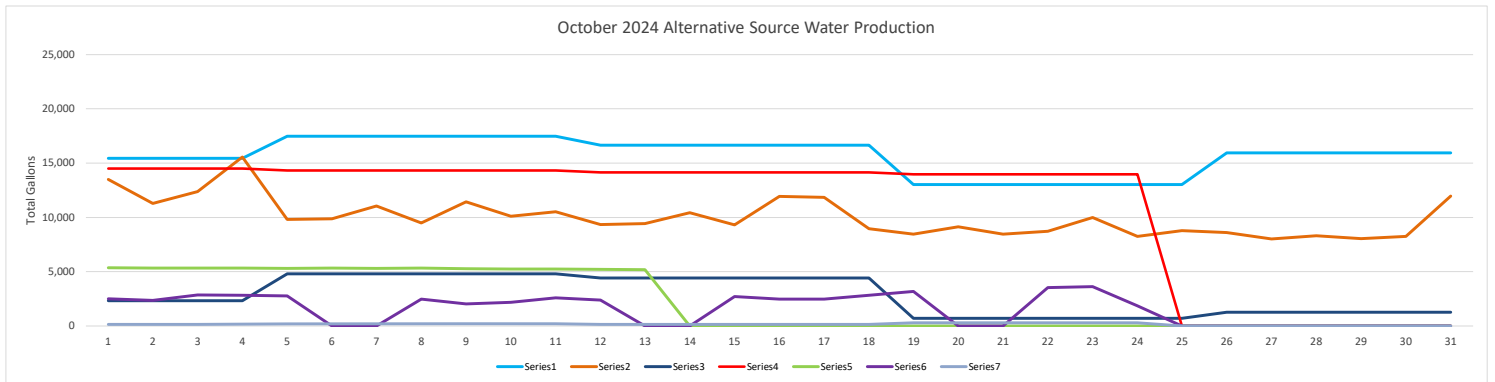
Month	Total	4th Fairway Diversion	18th Green Diversion	18th Fairway Diversion	MPCC No.8 Well	MPCC No.9 Well	MPCC Bird Rock #1 Well	MPCC Bird Rock #2 Well
Jan.	3,703 Gallons 0 AF	1,391 Gallons 0 AF	2,190 Gallons 0 AF	0 Gallons 0 AF	0 Gallons 0 AF	0 Gallons 0 AF	122 Gallons 0 AF	0 Gallons 0 AF
Feb.	5,601 Gallons 0 AF	0 Gallons 0 AF	2,022 Gallons 0 AF	0 Gallons 0 AF	1,805 Gallons 0 AF	264 Gallons 0 AF	1,510 Gallons 0 AF	0 Gallons 0 AF
Mar.	7,252 Gallons 0 AF	0 Gallons 0 AF	2,885 Gallons 0 AF	0 Gallons 0 AF	2,329 Gallons 0 AF	6 Gallons 0 AF	2,032 Gallons 0 AF	0 Gallons 0 AF
Apr.	3,433 Gallons 0 AF	0 Gallons 0 AF	595 Gallons 0 AF	0 Gallons 0 AF	1,184 Gallons 0 AF	53 Gallons 0 AF	1,450 Gallons 0 AF	151 Gallons 0 AF
May	2,657,388 Gallons 8 AF	1,390,098 Gallons 4 AF	699,114 Gallons 2 AF	59,150 Gallons 0 AF	285,630 Gallons 1 AF	33,971 Gallons 0 AF	120,754 Gallons 0 AF	68,671 Gallons 0 AF
Jun.	3,068,536 Gallons 9 AF	974,230 Gallons 3 AF	577,525 Gallons 2 AF	49,585 Gallons 0 AF	760,013 Gallons 2 AF	120,954 Gallons 0 AF	482,732 Gallons 1 AF	103,497 Gallons 0 AF
Jul.	2,471,896 Gallons 8 AF	749,790 Gallons 2 AF	442,064 Gallons 1 AF	42,693 Gallons 0 AF	617,228 Gallons 2 AF	109,272 Gallons 0 AF	453,586 Gallons 1 AF	57,263 Gallons 0 AF
Aug.	2,022,376 Gallons 6 AF	689,208 Gallons 2 AF	407,459 Gallons 1 AF	34,982 Gallons 0 AF	509,152 Gallons 2 AF	83,973 Gallons 0 AF	252,114 Gallons 1 AF	45,488 Gallons 0 AF
Sep.	1,691,358 Gallons 5 AF	529,017 Gallons 2 AF	348,473 Gallons 1 AF	51,391 Gallons 0 AF	453,674 Gallons 1 AF	147,199 Gallons 0 AF	136,104 Gallons 0 AF	25,500 Gallons 0 AF
Oct.	1,330,085 Gallons 4 AF	471,601 Gallons 1 AF	311,219 Gallons 1 AF	85,273 Gallons 0 AF	340,860 Gallons 1 AF	68,802 Gallons 0 AF	47,608 Gallons 0 AF	4,722 Gallons 0 AF
Nov.	363,711 Gallons 1 AF	203,470 Gallons 1 AF	142,420 Gallons 0 AF	17,821 Gallons 0 AF	0 Gallons 0 AF	0 Gallons 0 AF	0 Gallons 0 AF	0 Gallons 0 AF
Dec.	0 Gallons 0 AF	Gallons AF	Gallons AF	Gallons AF	Gallons AF	Gallons AF	Gallons AF	Gallons AF
Total	13,625,339 Gallons 42 AF	5,008,805 Gallons 15 AF	2,935,966 Gallons 9 AF	340,895 Gallons 1 AF	2,971,875 Gallons 9 AF	564,494 Gallons 2 AF	1,498,012 Gallons 5 AF	305,292 Gallons 1 AF





PEBBLE BEACH COMMUNITY SERVICES DISTRICT
 METERING - OCTOBER 2024 ALTERNATIVE RECLAMATION FLOW RECORD

DATE READ	ALT. RECLAM SOURCES TOTAL GALLONS	4th FAIRWAY GALLONS	18th GREEN GALLONS	18th FAIRWAY GALLONS	MPCC NO.8 WELL GALLONS	MPCC NO.9 WELL GALLONS	MPCC BIRD ROCK WELL #1 GALLONS	MPCC BIRD ROCK #2 WELL GALLONS	Comments
October									
1	53,750	15,443	13,483	2,317	14,496	5,371	2,500	140	-
2	51,381	15,443	11,290	2,317	14,496	5,337	2,358	140	-
3	52,945	15,443	12,362	2,317	14,496	5,342	2,845	140	-
4	56,092	15,443	15,553	2,317	14,496	5,317	2,826	140	-
5	54,711	17,482	9,823	4,812	14,322	5,300	2,777	195	WEEKEND
6	52,011	17,482	9,881	4,812	14,322	5,319	0	195	WEEKEND
7	53,154	17,482	11,051	4,812	14,322	5,292	0	195	-
8	54,086	17,482	9,497	4,812	14,322	5,318	2,460	195	-
9	55,560	17,482	11,443	4,812	14,322	5,283	2,023	195	-
10	54,344	17,482	10,114	4,812	14,322	5,255	2,164	195	-
11	55,178	17,482	10,523	4,812	14,322	5,255	2,589	195	-
12	52,275	16,649	9,324	4,429	14,130	5,221	2,371	151	WEEKEND
13	49,980	16,649	9,429	4,429	14,130	5,192	0	151	WEEKEND
14	45,797	16,649	10,438	4,429	14,130	0	0	151	-
15	47,364	16,649	9,296	4,429	14,130	0	2,709	151	-
16	49,778	16,649	11,947	4,429	14,130	0	2,472	151	-
17	49,672	16,649	11,845	4,429	14,130	0	2,468	151	-
18	47,152	16,649	8,963	4,429	14,130	0	2,830	151	-
19	39,642	13,036	8,459	719	13,952	0	3,186	290	WEEKEND
20	37,122	13,036	9,125	719	13,952	0	0	290	WEEKEND
21	36,450	13,036	8,453	719	13,952	0	0	290	-
22	40,260	13,036	8,731	719	13,952	0	3,532	290	-
23	41,627	13,036	9,993	719	13,952	0	3,637	290	-
24	38,107	13,036	8,249	719	13,952	0	1,861	290	-
25	22,525	13,036	8,770	719	0	0	0	0	-
26	25,779	15,932	8,590	1,257	0	0	0	0	WEEKEND
27	25,217	15,932	8,028	1,257	0	0	0	0	WEEKEND
28	25,492	15,932	8,303	1,257	0	0	0	0	-
29	25,240	15,932	8,051	1,257	0	0	0	0	-
30	25,441	15,932	8,252	1,257	0	0	0	0	-
31	29,142	15,932	11,953	1,257	0	0	0	0	-
TOTAL MONTHLY FLOW	1,330,085	471,601	311,219	85,273	340,860	68,802	47,608	4,722	
AVG. GALS. PER DAY	43,938	15,720	10,039	2,842	11,362	2,293	1,536	157	
PEAK DAY FLOW	56,092	17,482	15,553	4,812	14,496	5,371	3,637	290	
MINIMUM DAY FLOW	22,525	13,036	8,028	719	0	0	0	0	





PEBBLE BEACH COMMUNITY SERVICES DISTRICT
METERING - NOVEMBER 2024 ALTERNATIVE RECLAMATION FLOW RECORD

DATE READ	ALT. RECLAM SOURCES TOTAL GALLONS	4th FAIRWAY GALLONS	18th GREEN GALLONS	18th FAIRWAY GALLONS	MPCC NO.8 WELL GALLONS	MPCC NO.9 WELL GALLONS	MPCC BIRD ROCK WELL #1 GALLONS	MPCC BIRD ROCK #2 WELL GALLONS	Comments
November									
1	26,791	16,755	8,913	1,123	0	0	0	0	
2	34,602	16,755	16,724	1,123	0	0	0	0	WEEKEND
3	26,522	16,755	8,644	1,123	0	0	0	0	WEEKEND
4	30,048	16,755	12,170	1,123	0	0	0	0	-
5	27,248	16,755	9,370	1,123	0	0	0	0	-
6	28,522	16,755	10,644	1,123	0	0	0	0	-
7	30,958	16,755	13,080	1,123	0	0	0	0	-
8	23,401	17,237	4,172	1,992	0	0	0	0	-
9	19,229	17,237	0	1,992	0	0	0	0	WEEKEND
10	27,742	17,237	8,513	1,992	0	0	0	0	WEEKEND
11	53,852	17,237	34,623	1,992	0	0	0	0	-
12	34,796	17,237	15,567	1,992	0	0	0	0	-
13	0	0	0	0	0	0	0	0	-
14	0	0	0	0	0	0	0	0	-
15	0	0	0	0	0	0	0	0	-
16	0	0	0	0	0	0	0	0	WEEKEND
17	0	0	0	0	0	0	0	0	WEEKEND
18	0	0	0	0	0	0	0	0	-
19	0	0	0	0	0	0	0	0	-
20	0	0	0	0	0	0	0	0	-
21	0	0	0	0	0	0	0	0	-
22	0	0	0	0	0	0	0	0	-
23	0	0	0	0	0	0	0	0	WEEKEND
24	0	0	0	0	0	0	0	0	WEEKEND
25	0	0	0	0	0	0	0	0	-
26	0	0	0	0	0	0	0	0	-
27	0	0	0	0	0	0	0	0	-
28	0	0	0	0	0	0	0	0	-
29	0	0	0	0	0	0	0	0	-
30	0	0	0	0	0	0	0	0	WEEKEND
TOTAL MONTHLY FLOW	363,711	203,470	142,420	17,821	0	0	0	0	
AVG. GALS. PER DAY	12,124	6,782	4,747	594	0	0	0	0	
PEAK DAY FLOW	53,852	17,237	34,623	1,992	0	0	0	0	
MINIMUM DAY FLOW	0	0	0	0	0	0	0	0	

